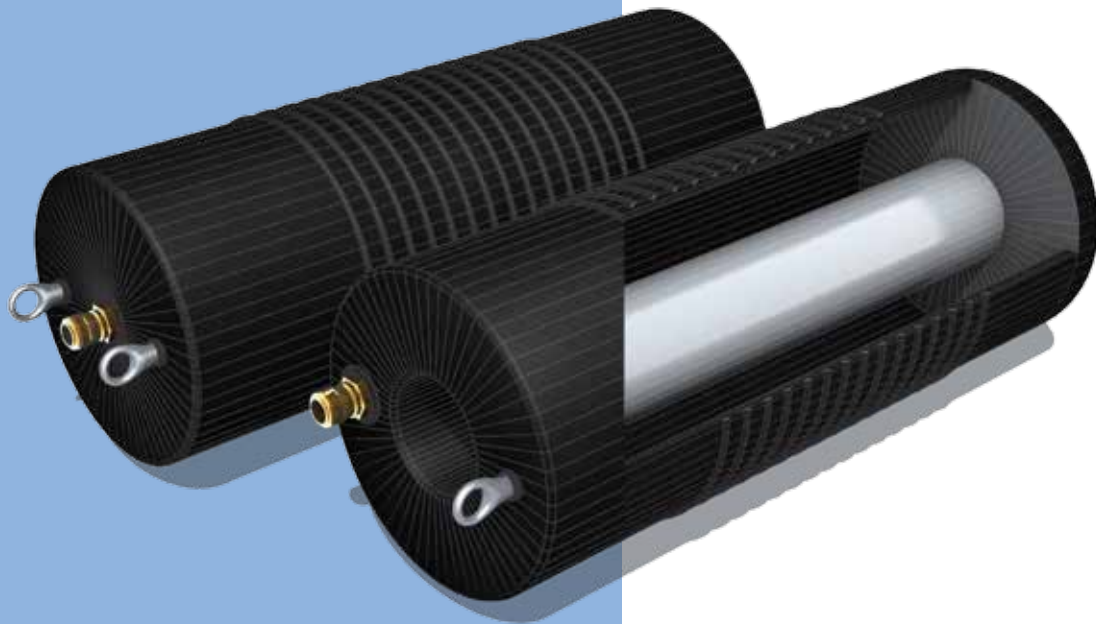
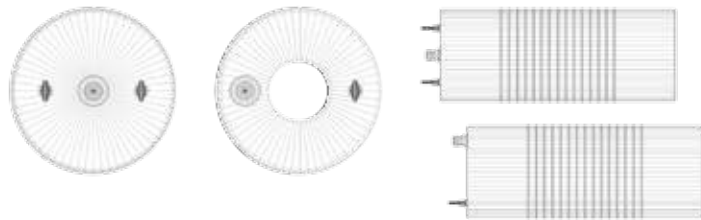


# MULTI-SIZE PLUGS FOR LARGER PIPELINE DIAMETERS PLUGY AND PLUGSY

## 1.5



10

Savatech multi-size plugs for larger pipeline diameters PLUGY and PLUGSY superior plug surface pattern, excellent choice of rubber compound, Rayon - Kevlar reinforcement, suitable length, low weight, excellent sealing abilities, anti-corrosive components, guarantees safe and easy usage.

All plugs are equipped with quick action couplings for inflation, larger sizes have two couplings installed. The size and number of eye bolts varies on plug size. Thanks to the flexibility of the plugs, they can be easily inserted through manholes of size 600 x 600 mm (up to 90°).



AVAILABLE IN USAGE RANGE FROM 40 mm UP TO 1800 mm



AVAILABLE IN OIL RESISTANT VERSION QUALITY



AIR AND WATER TIGHTNESS TEST ACCORDING TO EN1610 POSSIBLE

**60958**  
Polly lift hose 10 m,  
1.85 kg, 4.07 lbs



**60450**  
Adapter for air testing R2,  
0.60 kg, 1.32 lbs



**60449**  
Adapter for air testing R1,  
0.50 kg, 1.10 lbs



**60310**  
Single controller with pressure gauge, relief and ball valve;  
2.5 bar, 0.90 kg, 1.98 lbs



**71248**  
Plug inflation hose with quick coupling and nipple, fi 8 mm, 10 m, blue,  
1.20 kg, 2.65 lbs



## PLUGY - BLOCKING PLUG

| Part number | Nominal size EU | Size usage range |                | Required inflation pressure (bar) | Deflated plug |                    | Product weight (kg) | Eye bolt |             | Inflation valve |
|-------------|-----------------|------------------|----------------|-----------------------------------|---------------|--------------------|---------------------|----------|-------------|-----------------|
|             |                 | Min. dia. (mm)   | Max. dia. (mm) |                                   | Diameter (mm) | Rubber length (mm) |                     | M thread | Thread size |                 |
| 519423      | 40-70           | 40               | 70             | 2.5                               | 35            | 160                | 0.2                 | NA       | R 1/4"      |                 |
| 519424      | 70-150          | 70               | 150            | 2.5                               | 68            | 300                | 0.4                 | NA       | R 1/4"      |                 |
| 60417       | 100-200         | 100              | 200            | 2.5                               | 92            | 500                | 1.35                | M6       | R 1/4"      |                 |
| 526850      | 150-200         | 150              | 200            | 2.5                               | 142           | 350                | 1.85                | M8       | R 1/4"      |                 |
| 60418       | 150-300         | 150              | 300            | 2.5                               | 142           | 540                | 2.6                 | M8       | R 1/4"      |                 |
| 60419       | 200-400         | 200              | 400            | 2.5                               | 192           | 600                | 3.6                 | M8       | R 1/4"      |                 |
| 60599       | 300-525         | 300              | 525            | 2.5                               | 272           | 630                | 6.8                 | M8       | R 1/4"      |                 |
| 60422       | 350-600         | 350              | 600            | 2.5                               | 322           | 830                | 9.8                 | M10      | R 1/4"      |                 |
| 60606       | 375-750         | 375              | 750            | 2.5                               | 342           | 1050               | 11.9                | M10      | R 1/4"      |                 |
| 60453       | 500-800         | 500              | 800            | 2.5                               | 472           | 1150               | 19.5                | M10      | R 1/4"      |                 |
| 60425       | 500-1000        | 500              | 1000           | 1.5                               | 472           | 1150               | 19.5                | M10      | R 1/4"      |                 |
| 523941      | 600-1200        | 600              | 1200           | 1.5                               | 574           | 1450               | 38                  | M10      | 2 x R 3/8"  |                 |
| 78959       | 750-1500        | 750              | 1500           | 1                                 | 600           | 2300               | 75                  | M10      | 2 x R 1/4"  |                 |
| 535881      | 800-1800        | 800              | 1800           | 1                                 | 600           | 3000               | 106                 | M10      | 2 x R 1/4"  |                 |

## PLUGSY - BYPASS PLUG

| Part number | Nominal size EU | Size usage range |                | Required inflation pressure (bar) | Deflated plug |                    | Product weight (kg) | Eye bolt |             | Inflation valve | Bypass diameter (female) |
|-------------|-----------------|------------------|----------------|-----------------------------------|---------------|--------------------|---------------------|----------|-------------|-----------------|--------------------------|
|             |                 | Min. dia. (mm)   | Max. dia. (mm) |                                   | Diameter (mm) | Rubber length (mm) |                     | M thread | Thread size |                 |                          |
| 526849      | 70-150          | 70               | 150            | 2.5                               | 68            | 300                | 1.7                 | NA       | R 1/4"      | 1/2"            |                          |
| 60429       | 100-200         | 100              | 200            | 2.5                               | 92            | 500                | 2.7                 | M6       | R 1/4"      | 1"              |                          |
| 526851      | 150-200         | 150              | 200            | 2.5                               | 142           | 350                | 3.3                 | M8       | R 1/4"      | 1"              |                          |
| 60432       | 150-300         | 150              | 300            | 2.5                               | 142           | 540                | 4.3                 | M8       | R 1/4"      | 1"              |                          |
| 60434       | 200-400         | 200              | 400            | 2.5                               | 192           | 600                | 7                   | M8       | R 1/4"      | 2"              |                          |
| 60630       | 300-525         | 300              | 525            | 2.5                               | 272           | 630                | 12                  | M8       | R 1/4"      | 2"              |                          |
| 60440       | 350-600         | 350              | 600            | 2.5                               | 322           | 830                | 16                  | M10      | R 1/4"      | 2"              |                          |
| 60632       | 375-750         | 375              | 750            | 2.5                               | 342           | 1050               | 19.7                | M10      | R 1/4"      | 2"              |                          |
| 60454       | 500-800         | 500              | 800            | 2.5                               | 472           | 1150               | 32.5                | M10      | R 1/4"      | 2"              |                          |
| 60442       | 500-1000        | 500              | 1000           | 1.5                               | 472           | 1150               | 32.5                | M10      | R 1/4"      | 2"              |                          |
| 523942      | 600-1200        | 600              | 1200           | 1.5                               | 574           | 1450               | 55.5                | M10      | 2 x R 3/8"  | 4"/6"/8"        |                          |
| 78960       | 750-1500        | 750              | 1500           | 1                                 | 600           | 2300               | 91                  | M10      | 2 x R 1/2"  | 4"/6"/8"        |                          |
| 535882      | 800-1800        | 800              | 1800           | 1                                 | 600           | 3000               | 117                 | M10      | 2 x R 1/2"  | 4"/6"/8"        |                          |

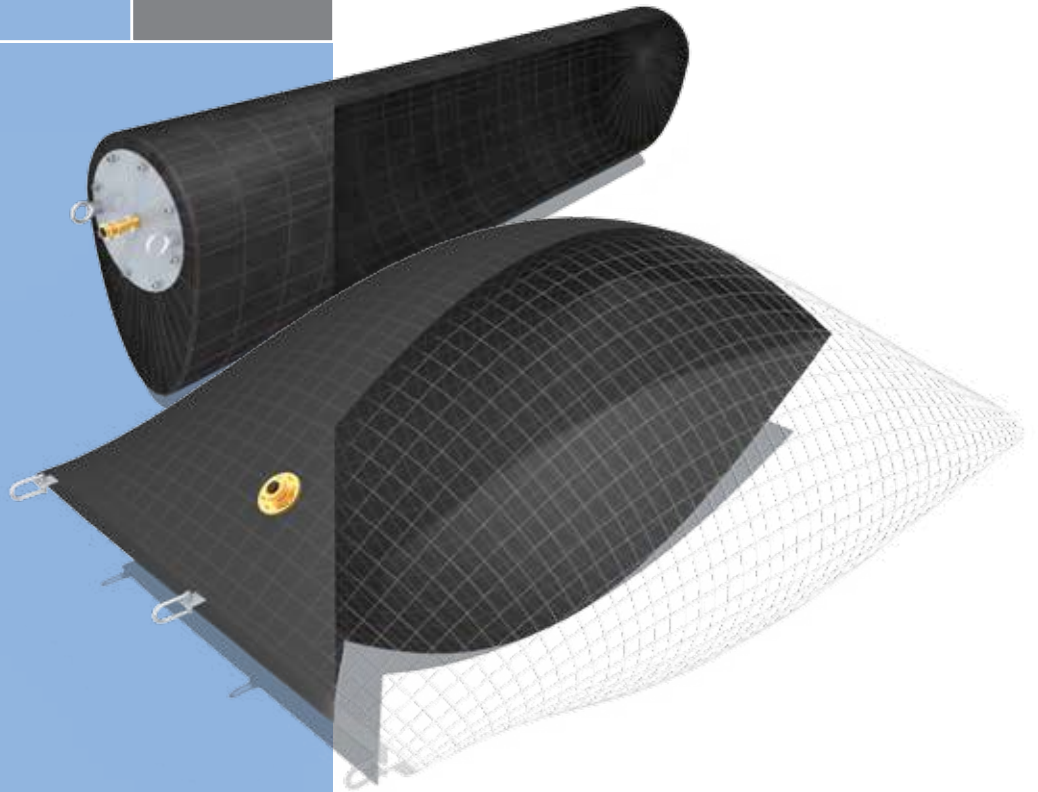
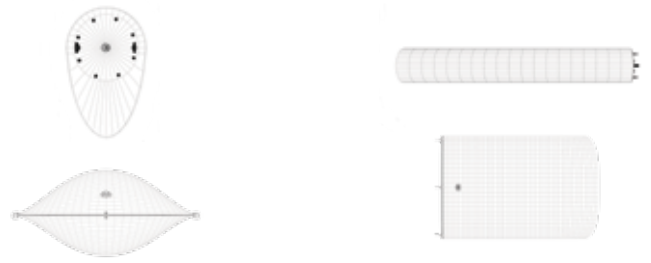
Note: The Part numbers are for plugs 4"

## BACK PRESSURE - measured in dry iron pipe (bar) - PLUGY, PLUGSY

| PLUG TYPE | Pipe Diameter (mm) |     |     |     |     |     |     |     |     |     |     |     |      |      |      |      |      |      |      |      |     |
|-----------|--------------------|-----|-----|-----|-----|-----|-----|-----|-----|-----|-----|-----|------|------|------|------|------|------|------|------|-----|
|           | 40                 | 70  | 100 | 150 | 200 | 250 | 300 | 350 | 400 | 500 | 600 | 800 | 1000 | 1200 | 1300 | 1400 | 1500 | 1600 | 1700 | 1800 |     |
| 40-70     | 2                  | 1.2 |     |     |     |     |     |     |     |     |     |     |      |      |      |      |      |      |      |      |     |
| 70-150    |                    | 2.2 | 1.7 | 1.3 |     |     |     |     |     |     |     |     |      |      |      |      |      |      |      |      |     |
| 100-200   |                    |     | 2.2 | 1.7 | 1.3 |     |     |     |     |     |     |     |      |      |      |      |      |      |      |      |     |
| 150-200   |                    |     |     | 2   | 1.5 |     |     |     |     |     |     |     |      |      |      |      |      |      |      |      |     |
| 150-300   |                    |     |     | 2.2 | 2   | 1.4 | 1.2 |     |     |     |     |     |      |      |      |      |      |      |      |      |     |
| 200-400   |                    |     |     |     | 2.2 | 2   | 1.7 | 1.5 | 1.2 |     |     |     |      |      |      |      |      |      |      |      |     |
| 300-525   |                    |     |     |     |     |     | 2   | 1.7 | 1.5 | 1.2 |     |     |      |      |      |      |      |      |      |      |     |
| 350-600   |                    |     |     |     |     |     |     | 2.1 | 1.9 | 1.6 | 1.3 |     |      |      |      |      |      |      |      |      |     |
| 375-750   |                    |     |     |     |     |     |     |     | 2   | 1.7 | 1.4 |     |      |      |      |      |      |      |      |      |     |
| 500-800   |                    |     |     |     |     |     |     |     |     | 1.8 | 1.4 | 1.1 |      |      |      |      |      |      |      |      |     |
| 500-1000  |                    |     |     |     |     |     |     |     |     | 1   | 0.8 | 0.6 | 0.5  |      |      |      |      |      |      |      |     |
| 600-1200  |                    |     |     |     |     |     |     |     |     |     | 1   | 0.7 | 0.6  | 0.5  |      |      |      |      |      |      |     |
| 750-1500  |                    |     |     |     |     |     |     |     |     |     |     | 1   | 0.9  | 0.8  | 0.7  | 0.6  | 0.5  |      |      |      |     |
| 800-1800  |                    |     |     |     |     |     |     |     |     |     |     |     | 1    | 1    | 0.9  | 0.8  | 0.7  | 0.6  | 0.5  | 0.5  | 0.4 |

# MULTI-SIZE EGG SHAPE PLUGS PLUGY AND PLUGSY EI

## 1.7



The shape of first two sizes is adjusted to the shape of a pipeline, while the larger sizes are pillow-shaped to simplify insertion through manholes. Plugs are available in seven standard sizes, both sealing and by-pass types.



**CUSTOM MADE  
DIMENSIONS  
AVAILABLE**

### PLUGY EI - BLOCKING PLUG

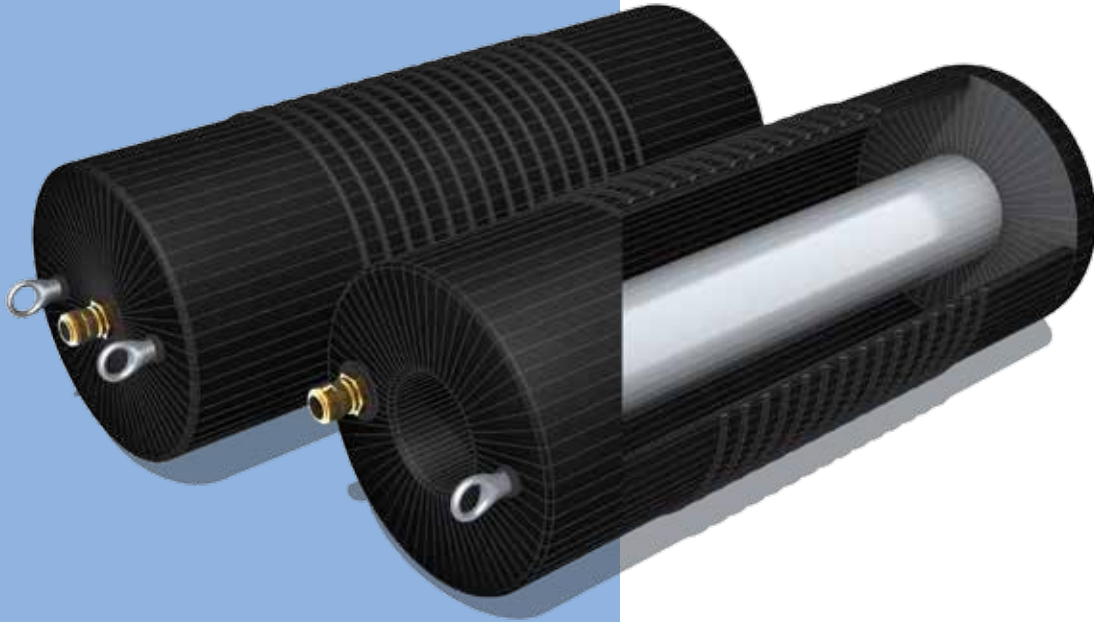
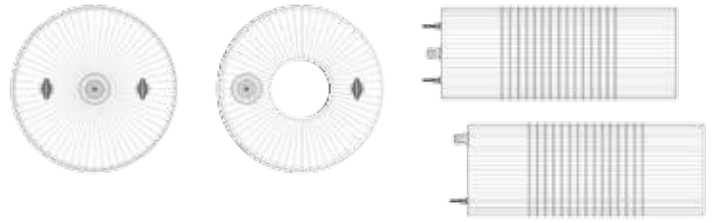
| Part number | Nominal size EU | Size usage range |                | Required inflation pressure (bar) | Max. allowed back pressure |                | Deflated plug |            |             | Product weight (kg) | Eye bolt | Shackles x piece | Inflation valve |
|-------------|-----------------|------------------|----------------|-----------------------------------|----------------------------|----------------|---------------|------------|-------------|---------------------|----------|------------------|-----------------|
|             |                 | Min. dia. (mm)   | Max. dia. (mm) |                                   | Water head (bar)           | Water head (m) | Diameter (mm) | Width (mm) | Length (mm) |                     | M thread | M thread         |                 |
| 503485      | EI 1            | 200/300          | 250/375        | 1.5                               | 0.5                        | 5              | 180x265       | /          | 600         | 7                   | 8        | NA               | TYPE 26         |
| 503486      | EI 2            | 300/450          | 350/525        | 1.5                               | 0.5                        | 5              | 280x415       | /          | 700         | 14.8                | 8        | NA               | TYPE 26         |
| 526694      | EI 3 - PILLOW   | 400/600          | 500/750        | 1.3                               | 0.5                        | 5              | 420           | 660        | 1800        | 20.1                | NA       | 12 x 2           | 2 x R1/2"       |
| 568807      | EI 3s - PILLOW  | 600/900          | 600/900        | 1.3                               | 0.5                        | 5              | 636           | 1000       | 1800        | 26.7                | NA       | 12 x 2           | 2 x R1/2"       |
| 519444      | EI 4 - PILLOW   | 700/1050         | 800/1200       | 0.9                               | 0.5                        | 5              | 751           | 1180       | 2300        | 36.1                | NA       | 12 x 2           | 2 x R1/2"       |
| 519447      | EI 5 - PILLOW   | 900/1350         | 1000/1500      | 0.8                               | 0.5                        | 5              | 955           | 1500       | 2900        | 53.9                | NA       | 12 x 3           | 2 x R1/2"       |
| 536345      | EI 6 - PILLOW   | 1200/1800        | 1400/2100      | 0.6                               | 0.4                        | 4              | 1394          | 2190       | 3400        | 92.4                | NA       | 12 x 3           | 2 x R1/2"       |

### PLUGY EI - BYPASS PLUG

| Part number | Nominal size EU | Size usage range |                | Required inflation pressure (bar) | Max. allowed back pressure |                | Deflated plug |            |             | Product weight (kg) | Eye bolt | Shackles x piece | Inflation valve |
|-------------|-----------------|------------------|----------------|-----------------------------------|----------------------------|----------------|---------------|------------|-------------|---------------------|----------|------------------|-----------------|
|             |                 | Min. dia. (mm)   | Max. dia. (mm) |                                   | Water head (bar)           | Water head (m) | Diameter (mm) | Width (mm) | Length (mm) |                     | M thread | M thread         |                 |
| 504158      | EI 1            | 200/300          | 250/375        | 1.5                               | 0.5                        | 5              | 180x265       | /          | 600         | 10.2                | 8        | NA               | 2"              |
| 504160      | EI 2            | 300/450          | 350/525        | 1.5                               | 0.5                        | 5              | 280x415       | /          | 700         | 17.9                | 8        | NA               | 3"              |
| 526695      | EI 3 - PILLOW   | 400/600          | 500/750        | 1.3                               | 0.5                        | 5              | 420           | 660        | 1800        | 25.4                | NA       | 12 x 2           | 2"              |
| 568808      | EI 3s - PILLOW  | 600/900          | 600/900        | 1.3                               | 0.5                        | 5              | 636           | 1000       | 1800        | 32.1                | NA       | 12 x 2           | 2"              |
| 519448      | EI 4 - PILLOW   | 700/1050         | 800/1200       | 0.9                               | 0.5                        | 5              | 751           | 1180       | 2300        | 42.1                | NA       | 12 x 2           | 2"              |
| 519449      | EI 5 - PILLOW   | 900/1350         | 1000/1500      | 0.8                               | 0.5                        | 5              | 955           | 1500       | 2900        | 60.8                | NA       | 12 x 3           | 2"              |
| 536350      | EI 6 - PILLOW   | 1200/1800        | 1400/2100      | 0.6                               | 0.4                        | 4              | 1394          | 2190       | 3400        | 100.9               | NA       | 12 x 3           | 2"              |

# HIGH PERFORMANCE PLUGS PLUGY AND PLUGSY HPF

## 1.8



14

Savatech high performance plugs PLUGY and PLUGSY HPF with high quality rubber mixture and additional Kevlar reinforcement built-in ensure reliable functioning in all conditions.

Savatech HPF Plugs are built for heavy duty use and more demanding working conditions.

The family of these plugs is ideal for flow stopping and pipe tightness testing.

Larger choice of bypass flows (4", 6", 8") is also available.



ALSO AVAILABLE  
AS OIL RESISTANT  
QUALITY



USAGE RANGE  
100 mm - 2400 mm



HIGHER BACK  
PRESSURES

**60958**

**Polly lift hose 10 m,**

1.85 kg, 4.07 lbs



**60310**

**Single controller with  
pressure gauge, relief  
and ball valve;**

2.5 bar, 0.90 kg, 1.98 lbs



## ACCESSORIES

| Part number |   |
|-------------|---|
| 547645      | Single fitting controller, 3,0bar (type 27) |
| 547646      | Single fitting controller, 2,5bar (type 57) |
| 547647      | Single fitting controller, 1,5bar (type 57) |
| 547650      | Single fitting controller, 1,0bar (type 57) |
| 547714      | Inflation hose HP NW10, 10m, blue (type 27) |
| 547715      | Inflation hose HP NW12, 10m, blue (type 57) |