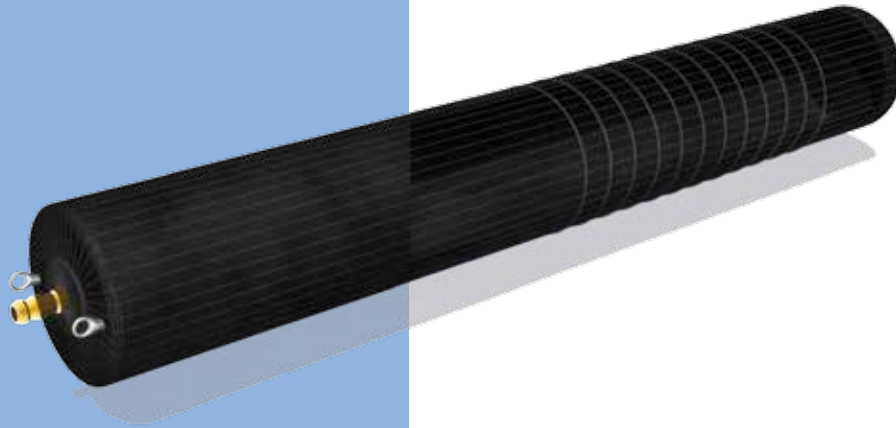
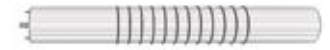


MULTI-SIZE HIGH-PRESSURE PLUGS PLUGY HP 6 AND 12 BAR

1.12



Savatech multi-size high-pressure plugs PLUGY HP 6 and 12 bar special reinforcements on the top and bottom of plugs as well as a double layer of cord fabric assure maximum safety at higher pressures. All plugs are equipped with eyelet bolts as well as with quick action couplings for inflation and deflation.



**SPECIAL
REINFORCEMENT
ALLOWS HIGH
BACK PRESSURES**

21

PLUGY HP 6 bar - BLOCKING PLUG

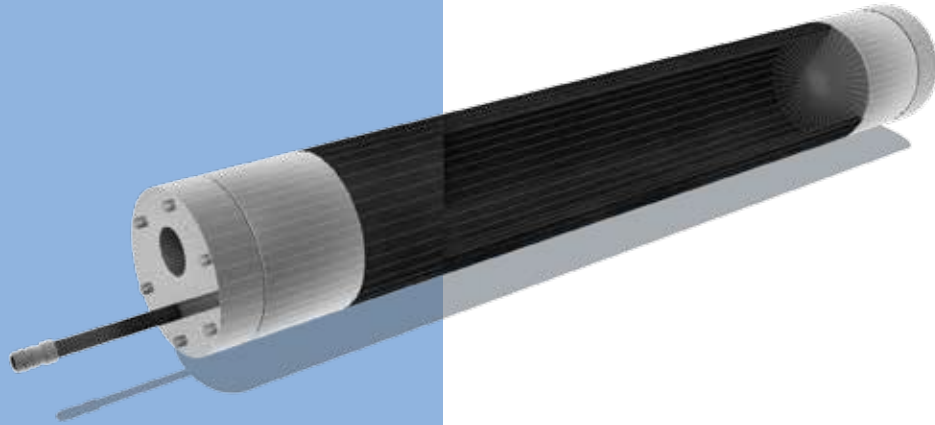
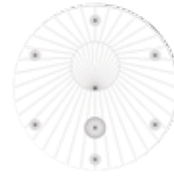
Part number	Nominal size EU	Size usage range		Required inflation pressure (bar)	Max. allowed back pressure (bar)	Deflated plug		Product weight (kg)	Eye bolt M thread	Inflation valve thread size
		Min. dia. (mm)	Max. dia. (mm)			Diameter (mm)	Length (mm)			
60887	100-150	100	150	6	3	92	535	1.2	6	R 1/4"
60907	150-200	150	200	6	3	142	575	2	8	R 1/4"
60908	200-300	200	300	6	3	192	635	3.2	8	R 1/4"
60909	350-500	350	500	6	3	322	865	8.7	8	R 1/4"
60924	500-600	500	600	6	3	472	1185	18	10	R 1/4"

PLUGY HP 12 bar - BLOCKING PLUG

Part number	Nominal size EU	Size usage range		Required inflation pressure (bar)	Max. allowed back pressure (bar)	Deflated plug		Product weight (kg)	Eye bolt M thread	Inflation valve thread size
		Min. dia. (mm)	Max. dia. (mm)			Diameter (mm)	Length (mm)			
518561	100-125	100	125	12	10	92	540	1.5	6	R 1/4"
518562	150	150	150	12	10	142	580	2.7	8	R 1/4"
518563	200-250	200	250	12	10	192	640	4.3	8	R 1/4"
518564	300-350	300	350	12	10	272	670	8	8	R 1/4"
518565	400	400	400	12	10	322	870	11.5	10	R 1/4"
518566	500	500	500	12	10	472	1190	24.1	10	R 1/4"

MULTI-SIZE HIGH-PRESSURE PLUGS AND PLUGGY HP 30 BAR

1.13



22

Market demands lead Savatech to design different sizes of high pressure inflatable plugs. Plugs are used for sealing of pipes with extremely high back pressures.



ALL METAL PARTS
FROM STAINLESS
STEEL

PLUGY HP 30 BAR - BLOCKING PLUG

Part number	Nominal size EU	Size Usage Range		Required inflation pressure (bar)	Max. allowed back pressure (bar)	Length (mm)	Rubber sleeve length (mm)	Product weight (kg)
		Min. dia. (mm)	Max. dia. (mm)					
538625	Ø 54x400	55	75	30	16	615	400	3
533837	Ø 73x400	75	100	30	16	600	400	5
533838	Ø 88x400	100	150	30	16	614	400	6.7
533839	Ø 122x400	150	200	30	16	621	400	13

PLUGSY HP 30 BAR - BYPASS PLUG

Part number	Nominal size EU	Size usage range		Required inflation pressure (bar)	Max. allowed back pressure (bar)	Flow through (mm)	Bypass thread ["]	Rubber sleeve length (mm)	Product weight (kg)
		Min. dia. (mm)	Max. dia. (mm)						
537553	Ø 54x400	55	75	30	16	10	3/8	400	3
537661	Ø 73x400	75	100	30	16	15	1/2	400	4.8
537323	Ø 88x400	100	150	30	16	20	3/4	400	7
537672	Ø 122x400	150	200	30	16	25	1	400	13